



### Features :

- Plastic case, Ultra slim
- Support wide range of AC/DC auxiliary supply
- Efficiencies up to 82%
- Full power between -25°C to +50°C
- Protection against short circuit, overload
- Cooling by free air convection

### Model Number Legend:

RPS15 -    - CE

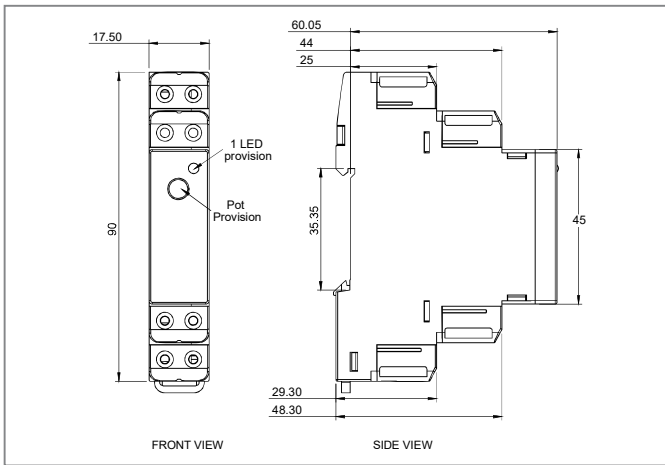
1. Output Voltage: 05 : 5 V  
12 : 12 V  
24 : 24 V

Certification : CE

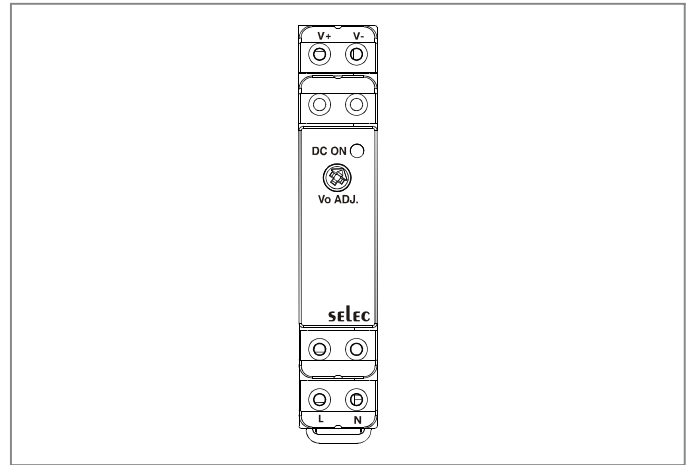
### SPECIFICATIONS:

MODEL		RPS15-05-CE	RPS15-12-CE	RPS15-24-CE
OUTPUT	NOMINAL DC VOLTAGE	5 V	12 V	24 V
	RATED CURRENT	2.4 A	1.25 A	0.63 A
	CURRENT RANGE	0 – 2.4 A	0 – 1.25 A	0 – 0.63 A
	RATED POWER	12 W	15 W	15 W
	RIPPLE & NOISE (max)	< 1.5 % of Vout	< 1 % of Vout	< 1 % of Vout
	VOLTAGE ADJ. RANGE	4.5 to 5.5 V	12 to 14 V	24 to 28 V
	VOLTAGE TOLERANCE		± 1 %	
	LINE REGULATION		± 1 %	
	LOAD REGULATION		± 1 %	
	TURN ON TIME		< 1 sec, full load	
	HOLD UP TIME		30 ms @ 230 VAC & 10 ms @ 115 VAC, full load	
RISE TIME		< 100 ms		
INPUT	VOLTAGE RANGE	90 - 264 VAC / 127 - 370 VDC		
	FREQUENCY RANGE	50 / 60 Hz		
	EFFICIENCY @ 230V AC	Up to 76%	Up to 80%	Up to 82%
	AC CURRENT	0.3 A @ 115 VAC; 0.15 A @ 230 VAC		
	INRUSH CURRENT	< 30 Amps; Measured at 264 VAC, 25°C Ambient, Cold start		
PROTECTION	OVERLOAD	110 % to 150 % of rated output current; Hiccup type, Autorecovery		
	OUTPUT SHORT CIRCUIT	Hiccup mode when output is shorted; Autorecovery type.		
ENVIRONMENT	OPERATING TEMP	-40°C to +70°C; De-rate linearly above 50°C from 100 % load at 50°C to 50 % load at 70°C. Note : Only start up guaranteed at -40°C with spec deterioration.		
	STORAGE TEMP	-40°C to +85°C		
	COOLING	Natural Cooling		
	HUMIDITY	5 to 95 % RH, Non condensing		
	ALTITUDE	2000 m		
	VIBRATION	Component : 10 ~ 500 Hz, 2 G 10 min./ 1 cycle, period for 60 min. each along X, Y, Z axes		
SAFETY & EMC	SAFETY STANDARDS	Designed to meet IEC 62368-1		
	DIELECTRIC WITHSTAND VOLTAGE	I/P to O/P : 4000 VAC		
	CONDUCTED EMISSION	CISPR32 ; Class B		
	RADIATED EMISSION	CISPR22 ; Class A		
MECHANICAL	DIMENSION	17.5 mm x 90 mm x 65 mm (W x H x D)		
	WEIGHT	< 100 gms		
	MOUNTING	35 mm DIN Rail		

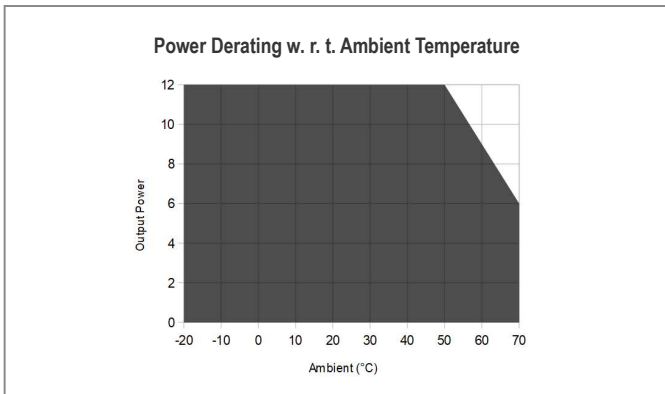
### Mechanical Dimensions (All are in mm)



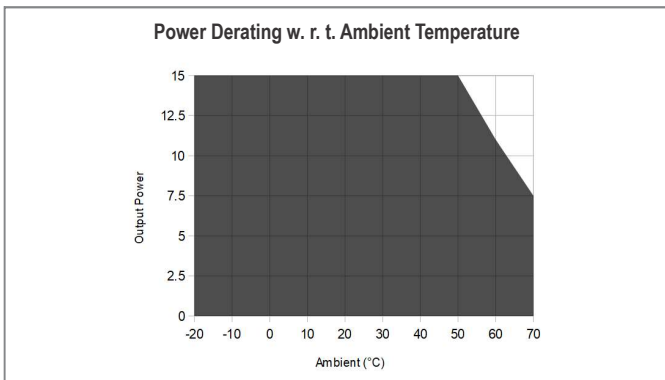
### Terminal connections



### Power derating w.r.t Ambient for 5V



### Power derating w.r.t Ambient for 12V & 24V



### Compliance

Applicable EMI / EMC Standards		
Product Standard		
Category	Reference Standards	Testing Level
Conducted Emission	CISPR32	CLASS B
Radiated Emission	CISPR22	CLASS A
Electrostatic Discharge	IEC61000-4-2	Level 4, Criteria A Level 3, Criteria A
Radiated Susceptibility	IEC61000-4-3	Level 3, Criteria B
Electrical Fast Transient / Burst	IEC61000-4-4	Level 3, Criteria A
Surge	IEC61000-4-5	Level 3, Criteria A
Conducted Susceptibility	IEC61000-4-6	Level 3, Criteria B
Power Frequency Magnetic Field	IEC61000-4-8	Level 4, Criteria A
Voltage Dips & Interruption	IEC61000-4-11	Criteria A & B
Safety	Designed to meet IEC62368-1	

### Ordering information

Product Code	Description	Certification
RPS15-05-CE	12 W, 05 V / 2.4 A DIN rail mounted Power Supply in Plastic Housing	CE RoHS
RPS15-12-CE	15 W, 12 V / 1.25 A DIN rail mounted Power Supply in Plastic Housing	CE RoHS
RPS15-24-CE	15 W, 24 V / 0.63 A DIN rail mounted Power Supply in Plastic Housing	CE RoHS